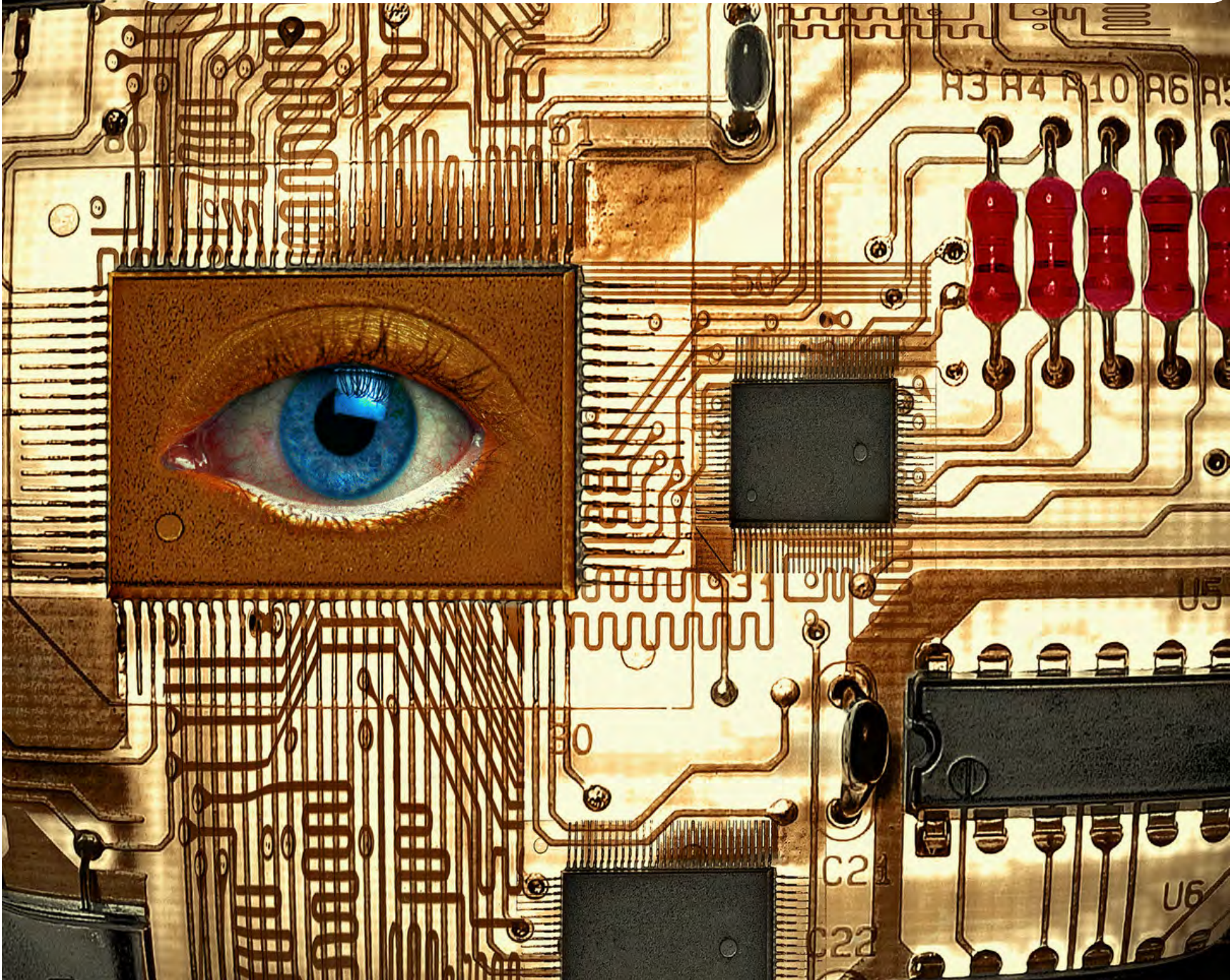


MONIDOR

door and gate monitor



The efficient way to add door and gate monitoring to any elevator control system.

Product Overview

MON][DOR is a code compliant door and gate monitoring system that provides elevator passenger safety. Door and gate contacts are monitored and if the contacts are malfunctioning the system will hold the elevator at the landing, thus preventing unanticipated elevator movement while doors are open.

The MON][DOR is in complete compliance with NYC Building Code requirements. It is the only monitoring device that is universal and can be used on both processor and relay logic systems.

Ensures Safety

Designed with redundancy checking, no relay fail will go unnoticed. Door and gate contacts are monitored for shorts and grounds and if a fail occurs, the system will hold the elevator at the landing. Bypass switching with strobe notification is another safety feature provided by the MON][DOR to ensure passenger safety. The system resets at each landing to reevaluate door and gate switch conditions.

Universal Application

The use of relay logic design ensures controller compatibility and ease of installation. No special tools, software or programming are required to install and operate the MON][DOR system. The MON][DOR power supply and monitoring section operate in a wide voltage range allowing complete compatibility with both relay logic and microprocessor based elevator control systems.

Code Compliant

In December 2013, the NYC Building Code 3.10.12 (Appendix K3) was amended to provide for a monitoring system to prevent automatic operation of passenger and freight elevators with faulty door contact circuits. The new code addition requires all automatic and freight elevators to monitor the door position and hall door lock and gate switch operation to ensure no ground or short might cause an unsafe condition to exist. The system is modified for Fire Service operation according to code requirements.



Technical Corner

Specifications

- Outputs are provided by relay contacts rated at 10 amps
- Redundant components and redundancy checking assures a reliable system
- LED, audible signal and strobe light for "bypass active" indication
- Power supply operates within range of 100v to 250v AC/DC
- Monitoring systems operates within 24v to 250v AC/DC
- 1/8" thick PC board is used with 2oz copper traces and 12,000 volt insulation
- Installation time: 4-6 hours (motor room wiring)
- Cabinet is 18" h x 18" w

MONIDOR
door and gate monitor

 **ELECTRODYN**
elevator retrofit solutions
www.electrodyn.com • 800-447-5442